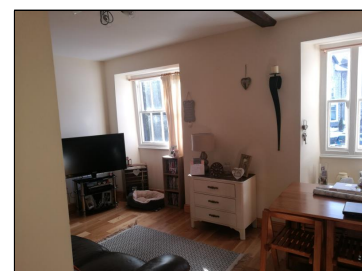
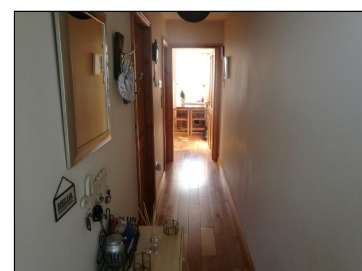
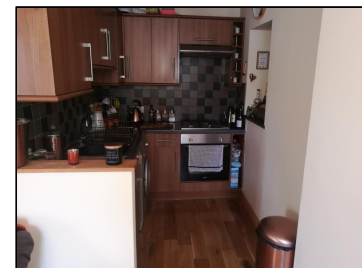


Rent : £495.00 PCM

Green View, Kendal, Cumbria, LA9 4QS



Description:

This one bedroom unfurnished first floor flat located on the edge of Kendal Green is only a short walk from Kendal town centre, and is well placed for access to the A591. The flat offers lounge with views over the green, kitchen equipped with appliances, double bedroom and shower room. On street parking nearby. SLDC band A. EPC rated D. Pets by consent. No smokers. Applicants in receipt of housing allowance will be considered with a guarantor, at the landlords discretion. A Holding Deposit of £114, equivalent to one weeks rent, will be payable upon application, and before references are sought. Subject to satisfactory references and before the commencement of a tenancy, a Tenancy Deposit of £570, equivalent to five weeks rent, will be payable (the Holding Deposit will form part of the Tenancy Deposit).

Energy Efficiency Rating		Environmental Impact (CO ₂) Rating	
Current	Potential	Current	Potential
Very energy efficient - lower running costs		Very environmentally friendly - lower CO ₂ emissions	
105-120 A		105-100 A	
81-104 B		81-84 B	
65-80 C		65-69 C	
55-64 D	59	55-59 D	64
45-54 E		45-54 E	
35-44 F		35-44 F	
15-34 G		15-29 G	
Not energy efficient - higher running costs		Not environmentally friendly - higher CO ₂ emissions	
England, Scotland & Wales	EU Directive 2002/91/EC	England, Scotland & Wales	EU Directive 2002/91/EC

Directions:

Leave Kendal town centre following signs for Windermere A591. After passing through traffic lights at the junction with Burneside Road follow the road up hill and take a right turning onto Kendal Green. Green View in on the right overlooking the Green.